

**Varun Autocoat**

ARCHITECTURAL POWDER COATINGS

**Interpon**<sup>®</sup>

POWDER COATINGS

■ Architectural

**Interpon D RTS (Ready to Ship)  
powder coatings**  
Building a greener  
tomorrow

Your imagination starts with our finish

**AkzoNobel**



## Interpon D powder coatings

# Building a greener tomorrow

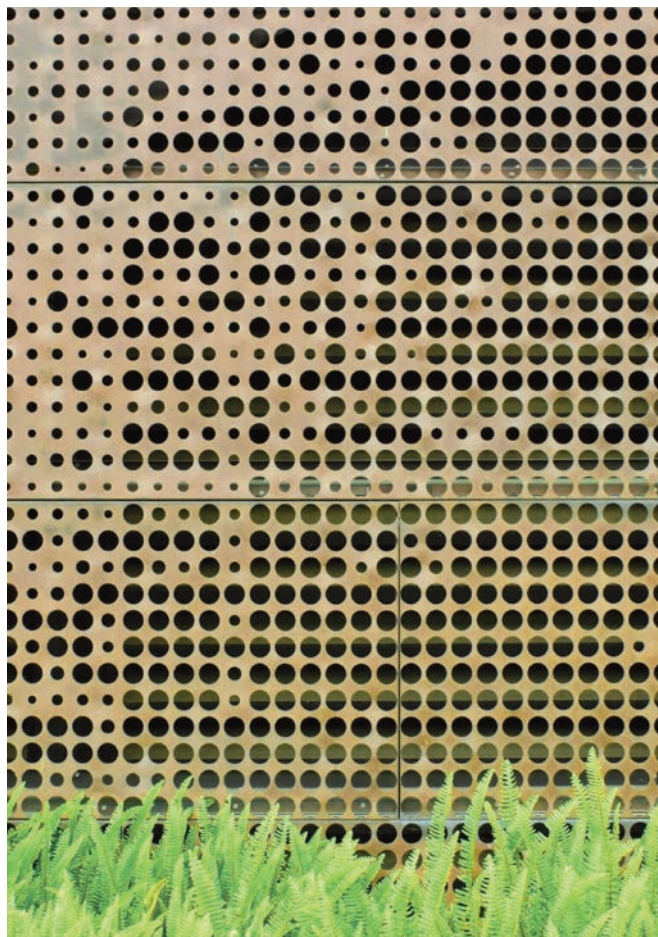
Interpon has been providing powder coatings to the architectural industry for half a century, delivering the protection for buildings to stand the test of time. The **Interpon D** range comes in a array of colors, textures and finishes to enable architects, fabricators and system houses to bring their imagination to life. Whether it's a façade, curtain wall, veranda, fencing, window, door or internal partitioning, our powder coatings deliver the ultimate in standout protection. And as the first powder coatings range to be awarded an Environmental Product Declaration (EPD), Interpon is helping to realize a greener tomorrow.

## Sustainability

### Why are Interpon powder coatings a sustainable coatings option?

Our powder coatings use no Volatile Organic Compounds (VOCs), no toxic-heavy metals such as lead or chromium and produce virtually zero waste since overspray is able to be reclaimed or recycled. And with innovative powder coatings which are helping to preserve natural resources such as wood and stone, it is little surprise that Interpon D is recognized for its environmental credentials, evidenced by being the first range of powder coatings to receive an Environmental Product Declaration (EPD).

For AkzoNobel, sustainability is integrated into everything we do. We strive to lead our industry by pioneering a new world of possibilities by empowering people, reducing our impact on the planet and consistently innovating to deliver the most sustainable solutions for our customers.



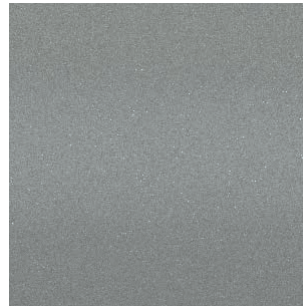
# Interpon®

POWDER COATINGS

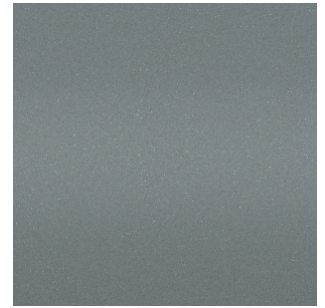
Colors and trends  
for the world's finest  
creative minds

## Interpon D1036

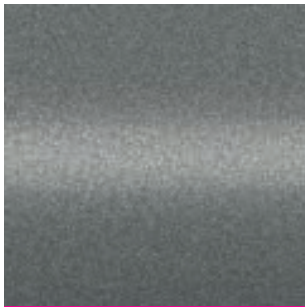
### Metallics



**SW10AN** RAL9006  
Satin



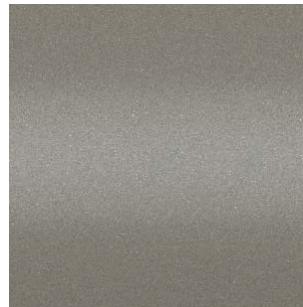
**SW116N** RAL7001  
Satin



**SW113N** RAL9022  
Satin



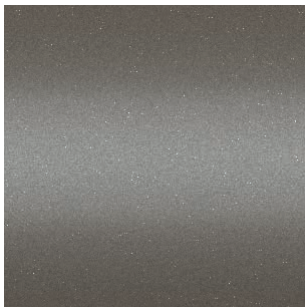
**SW17AN** RAL9007  
Satin



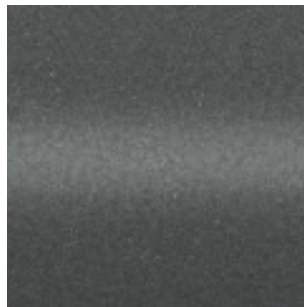
**SWC39N** Metro Gold  
Satin



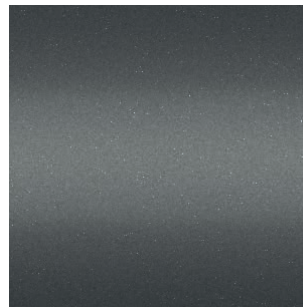
**SW11GN** RAL1035  
Satin



**SW30BN** 2500 MT Gray  
Texture



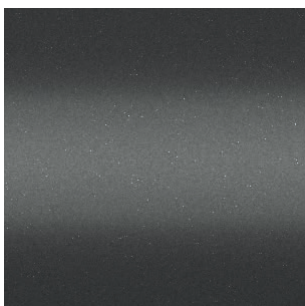
**SW320N** Veranda 25  
Texture



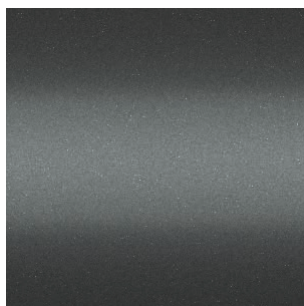
**SW351N** Texture 2600 Sable  
Texture



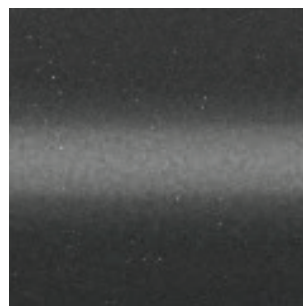
**SW18AN** RAL9023  
Satin



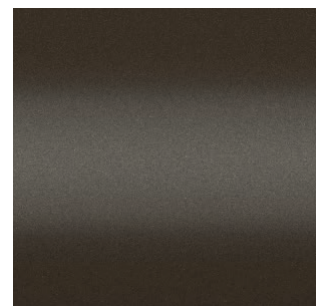
**SW326N** Sparkle Grey  
Texture



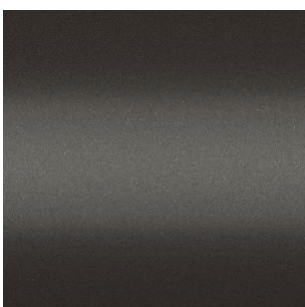
**SW31BN** 2900 MT Gray  
Texture



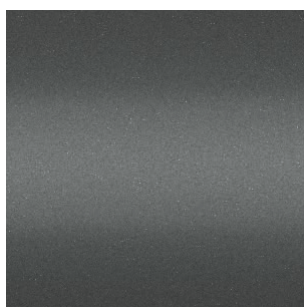
**SW334N** Dark Gray  
Texture



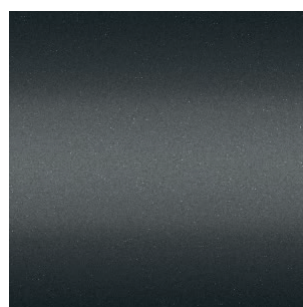
**SW283N** Chocolate Brown  
Matt



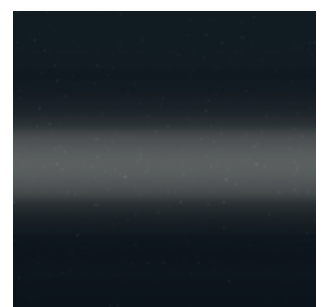
**SW28BN** Anodic Bronze III  
Matt



**SW316N** Anodic Bronze  
Texture



**SW324N** Noir 2200 Sable  
Texture



**SW335N** Veranda 22  
Texture

\*Colors are intended as a guide only. Actual colors may vary. Please request color panel for more accurate color representation.

# Interpon D1036

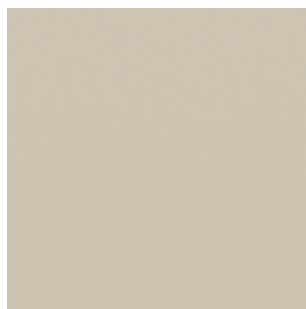
## Solid shades



**SP12AN** RAL7035  
Satin smooth



**SP14BN** RAL7038  
Satin smooth



**SD10AN** RAL1013  
Satin smooth



**SD11AN** RAL1015  
Satin smooth



**SP12CN** RAL7032  
Satin smooth



**SP100N** RAL7037  
Satin smooth



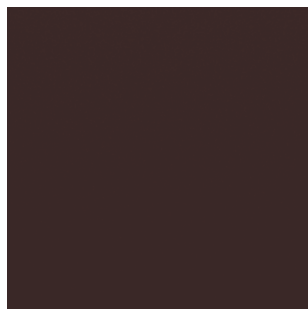
**SP10AN** RAL7006  
Satin smooth



**SM132N** RAL8004  
Satin smooth



**SP15AN** RAL7022  
Satin smooth



**SM12AN** RAL8017  
Satin smooth



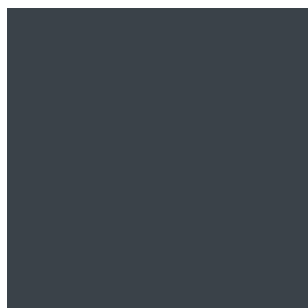
**SP294N** RAL7043  
Matt smooth



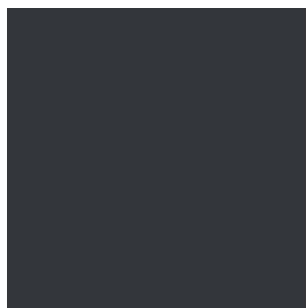
**SP255N** RAL7031  
Matt smooth



**SP214N** RAL7012  
Matt smooth



**SP203N** RAL7015  
Matt smooth



**SP223N** RAL7024  
Matt smooth



**SP338N** Schueco Grey  
Fine Texture



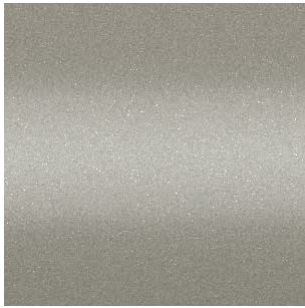
**SP18AN** RAL7016  
Satin smooth



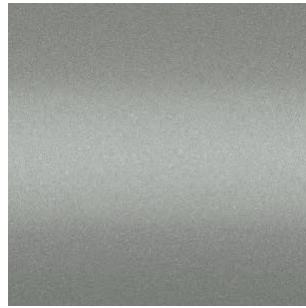
**SN25AN** RAL9005  
Matt smooth

# Interpon D2525

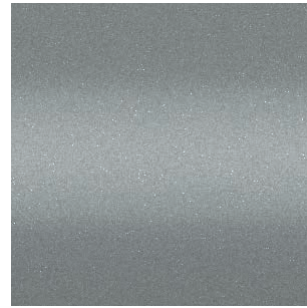
## Bonded Metallics



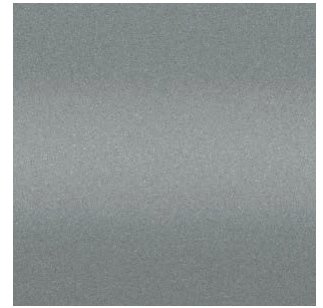
**Y2204N** Silver champagne  
Matt



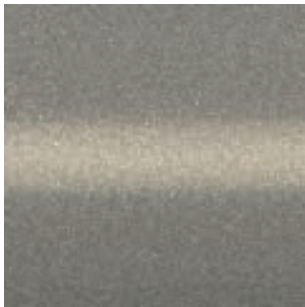
**Y2208N** Soft Silver  
Matt



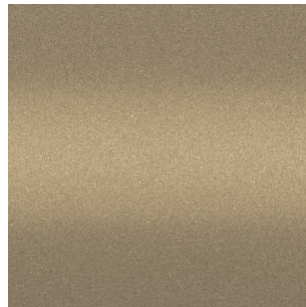
**Y2211N** RAL9006  
Matt



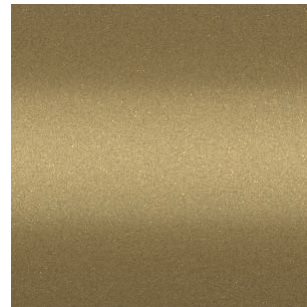
**YW26AN** Met Eco Gray  
Matt (Dry Blend)



**Y2109N** Sumela  
Satin



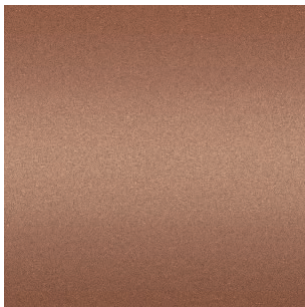
**Y2200N** Golden Beach  
Matt



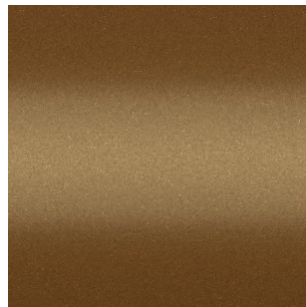
**Y2207N** Antu  
Matt



**Y2206N** Gold Splendor  
Matt



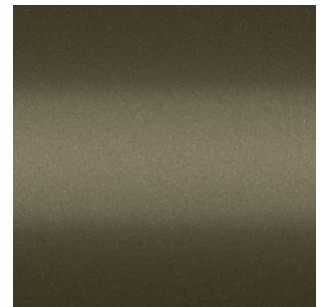
**Y2304N** Tasiliaq Sable  
Texture



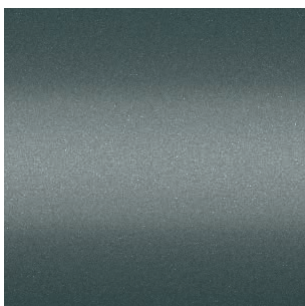
**Y2216N** Dark Gold  
Matt



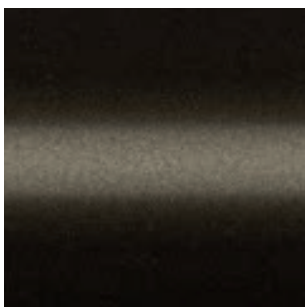
**Y2218N** Steel Bronze-1  
Matt



**Y2217N** Steel Bronze-2  
Matt



**Y2375N** Baku  
Texture



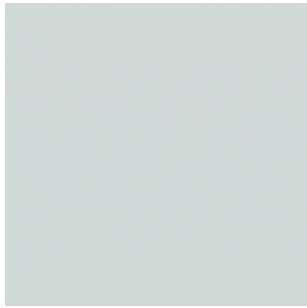
**Y2224N** Anodic Bronze SM30  
Matt smooth

AkzoNobel's exclusive bonded technology in India sets a new standard for premium metallic powder coatings. It enhances luster, finish, and color consistency while eliminating the picture frame effect. As a sustainable solution, Interpon is VOC-free, with reclaimable overspray, creating enduring impressions and futures.

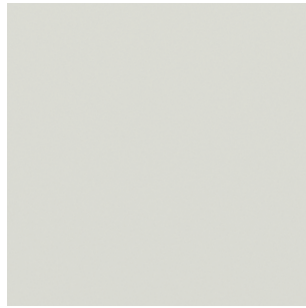


# Interpon D2525

## Solid shades



**YCB18N** RAL9016  
Satin smooth



**YC19AN** RAL9003  
Satin smooth



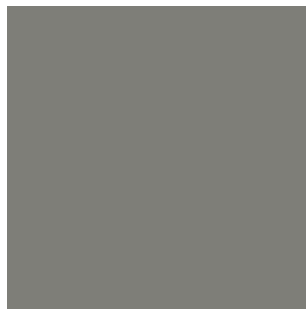
**YCA87N** RAL9010  
Satin smooth



**YP227N** RAL7047  
Matt smooth



**YC11AN** RAL9002  
Satin smooth



**YP278N** RAL7030  
Matt smooth



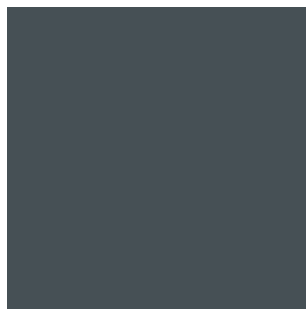
**YP313N** Quartz Gray  
Fine texture



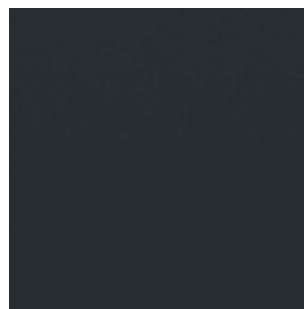
**YP263N** RAL7012  
Matt smooth



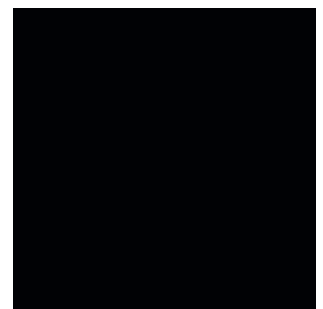
**YP242N** RAL7043  
Matt smooth



**YL201N** RAL7011  
Matt smooth



**YP127N** RAL7021  
Satin smooth



**YN213N** RAL9005  
Matt smooth

## Interpon D Stone Effect

**Interpon D2000 Stone Effect** powder coatings help architects transform metal surfaces, pushing the boundaries of what's possible and giving their creations a beautiful, stone-like appearance. Available in seven different styles to ensure stunning variations in color and patination, the specialty coating has all the aesthetic qualities of Portland stone, limestone and brickwork, but without the practical challenges and cost that come with installing the real thing.



**Y4310N** White Stone  
Texture



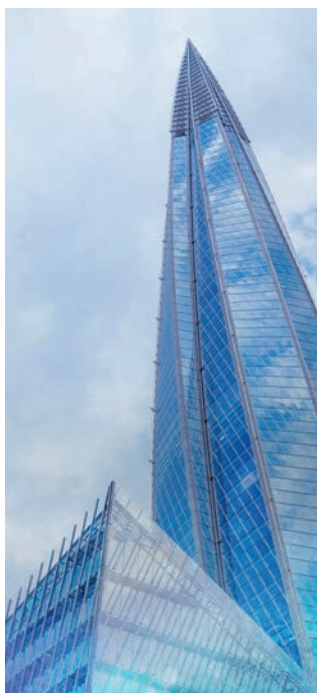
**Y4314N** Sand Stone  
Texture



**Y4316N** Red Brick  
Texture



**Y4317N** Dark Grey Natural Concrete  
Texture



## Warranties

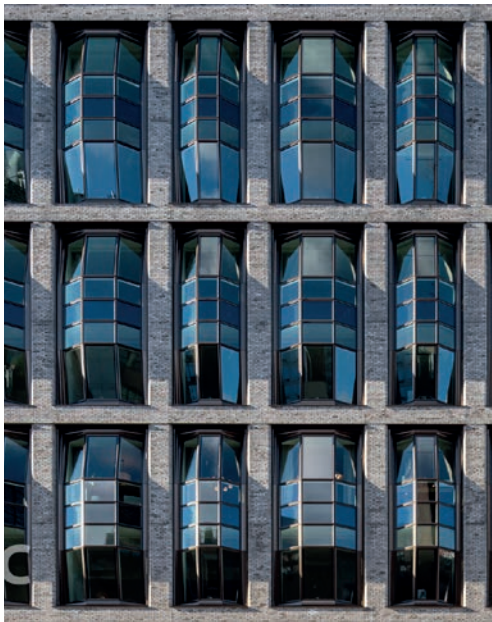
As a leading powder coatings business, it is our mission to help create buildings and relationships that stand the test of time. This means not only providing the colors and finishes to bring architectural creations to life, but also delivering the product warranties to assure customers that their powder coatings have been benchmarked and validated against the industry's most rigorous testing regimes.

The Interpon D series provide film integrity and decorative warranties of 15/10 years, 25/15 years and 30/20 years. They also meet the major architectural standards of AAMA and GSB, as well as Qualicoat.



	Standard Durability	Superdurability	Hyperdurability
<b>Product ranges</b>	Interpon D1036	Interpon D2525	Interpon D3020
<b>Powder film warranty</b>	15 Years	25 Years	30 Years
<b>Decorative warranty color</b>	10 Years	15 Years	20 Years
<b>Color retention (ASTM D2244)</b>	$\Delta E < 5$	$\Delta E < 5$	$\Delta E < 5$
<b>Gloss retention</b>	Gloss loss evenly	Gloss loss evenly	Gloss loss evenly
<b>Chalking (ASTM D4214)</b>	Rating $\geq$ No.8	Rating $\geq$ No.8	Rating $\geq$ No.8
<b>Resin type</b>	Polyester	Polyester	Fluoropolymer (alternative to PVDF)
<b>Performance specifications</b>	AAMA2603, BS6496, AS3715	AAMA2604	AAMA2605
<b>Florida exposure test</b>	1 year South Florida	5 years South Florida	10 years South Florida
<b>Corrosion resistance</b>	1,500 hours (salt spray)	3,000 hours (salt spray)	2,000 hours (cyclic corrosion)
<b>Mechanical</b>	Excellent	Excellent	Good
<b>Finishes</b>	Matt, Satin, Gloss, Texture	Matt, Satin, Gloss, Texture	Matt, Fine Texture
<b>Color range</b>	Virtually all colors from nearly any source (RAL, Pantone and custom colors). Our color offer is subject to technical approval.		

\*Warranty is only applicable for Interpon D approved applicator.



Lantern House, New York USA  
Interpon D3000



Atlantis The Royal, Dubai, United Arab Emirates  
Interpon D2525

## AkzoNobel

Since 1792, we've been supplying the innovative paints and coatings that help to color people's lives and protect what matters most. Our world class portfolio of brands – including International, Sikkens and Interpon – is trusted by customers around the globe. We're active in more than 150 countries and use our expertise to sustain and enhance everyday life. Because we believe every surface is an opportunity. It's what you'd expect from a pioneering and long-established paints company that's dedicated to providing sustainable solutions and preserving the best of what we have today – while creating an even better tomorrow. Let's paint the future together.

For more information please visit [www.akzonobel.com](http://www.akzonobel.com).

© 2024 Akzo Nobel N.V. All rights reserved.

All products supplied & technical advice given are subject to the standard terms of sale of the AkzoNobel supplying company. Copyright ©2024 Akzo Nobel Powder Coatings Ltd. Interpon is a registered trademark of AkzoNobel.

Issue 1 - 12/2024

### Follow us

Powder Coatings by AkzoNobel



[interpon.com](http://interpon.com)

# Interpon®

Speak to your local representative to order samples and learn more about what **Interpon D** can do for you.



**Interpon Design App**  
Created especially for  
architects and specifiers



### Environmental Production Declaration

An EPD® is a certified Eco-footprint; our commitment to sustainability.

### AkzoNobel India Limited

Plot #62P, 62A, 62B, 43E,  
Hoskote Industrial Area.  
Bangalore - 562 114  
India

T: 7349266869

[Interpon.India@Akzonobel.com](mailto:Interpon.India@Akzonobel.com)



**Architectural**

Your imagination starts with our finish