

Varun Autocoat

ARCHITECTURAL POWDER COATINGS

Interpon[®]

POWDER COATINGS

■ Architectural

**Interpon D RTS (Ready to Ship)
powder coatings**
Building a greener
tomorrow

Your imagination starts with our finish

AkzoNobel



Interpon D powder coatings Building a greener tomorrow

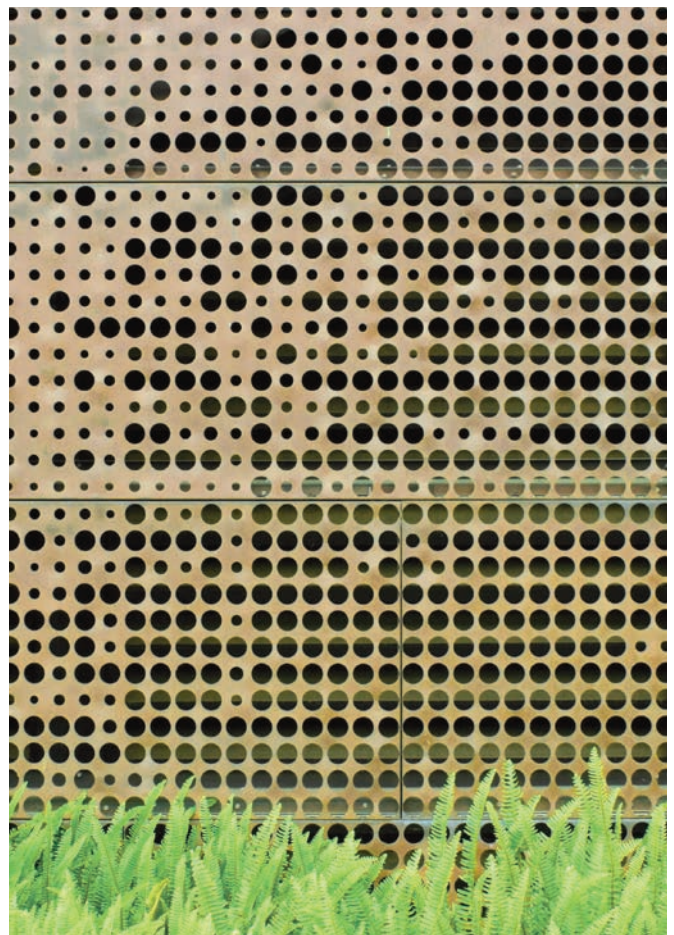
Interpon has been providing powder coatings to the architectural industry for half a century, delivering the protection for buildings to stand the test of time. The **Interpon D** range comes in a array of colors, textures and finishes to enable architects, fabricators and system houses to bring their imagination to life. Whether it's a façade, curtain wall, veranda, fencing, window, door or internal partitioning, our powder coatings deliver the ultimate in standout protection. And as the first powder coatings range to be awarded an Environmental Product Declaration (EPD), Interpon is helping to realize a greener tomorrow.

Sustainability

Why are Interpon powder coatings a sustainable coatings option?

Our powder coatings use no Volatile Organic Compounds (VOCs), no toxic-heavy metals such as lead or chromium and produce virtually zero waste since overspray is able to be reclaimed or recycled. And with innovative powder coatings which are helping to preserve natural resources such as wood and stone, it is little surprise that Interpon D is recognized for its environmental credentials, evidenced by being the first range of powder coatings to receive an Environmental Product Declaration (EPD).

For AkzoNobel, sustainability is integrated into everything we do. We strive to lead our industry by pioneering a new world of possibilities by empowering people, reducing our impact on the planet and consistently innovating to deliver the most sustainable solutions for our customers.



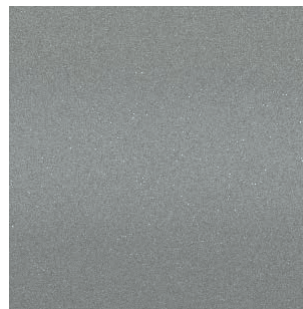
Interpon®

POWDER COATINGS

Colors and trends
for the world's finest
creative minds

Interpon D1036

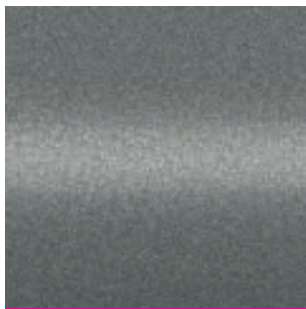
Metallics



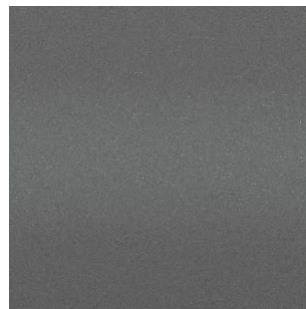
SW10AN RAL9006
Satin



SW116N RAL7001
Satin



SW113N RAL9022
Satin



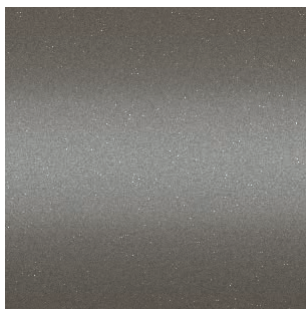
SW17AN RAL9007
Satin



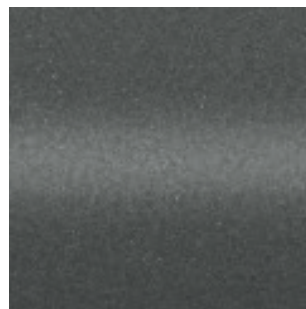
SWC39N Metro Gold
Satin



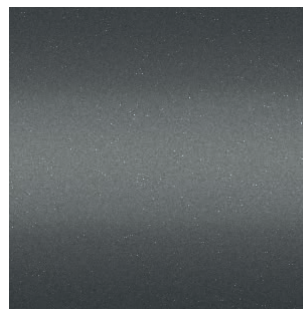
SW11GN RAL1035
Satin



SW30BN 2500 MT Gray
Texture



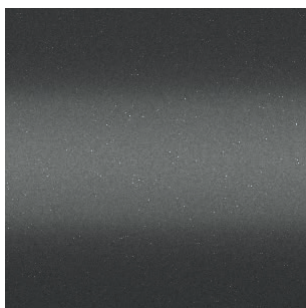
SW320N Veranda 25
Texture



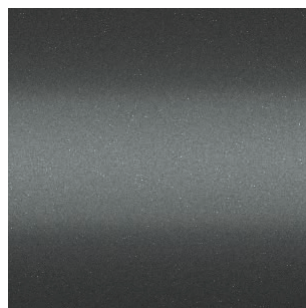
SW351N Texture 2600 Sable
Texture



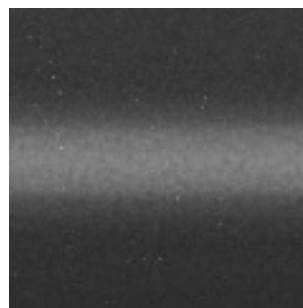
SW18AN RAL9023
Satin



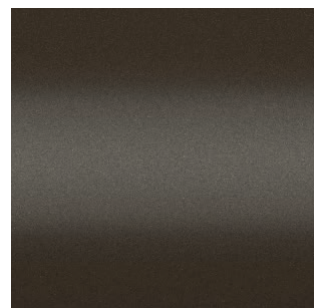
SW326N Sparkle Grey
Texture



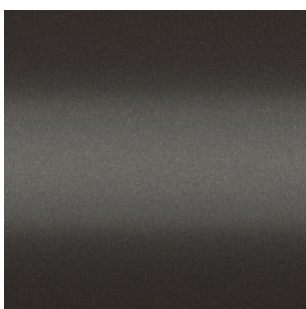
SW31BN 2900 MT Gray
Texture



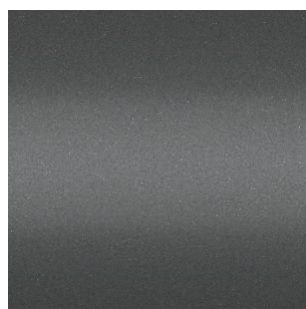
SW334N Dark Gray
Texture



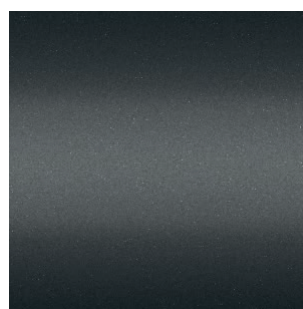
SW283N Chocolate Brown
Matt



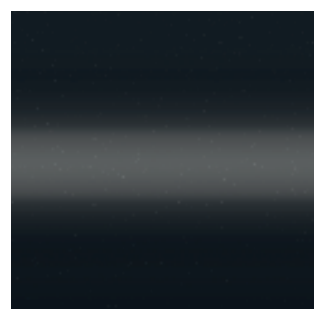
SW28BN Anodic Bronze III
Matt



SW316N Anodic Bronze
Texture



SW324N Noir 2200 Sable
Texture

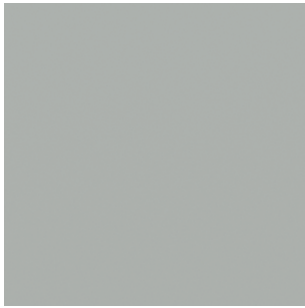


SW335N Veranda 22
Texture

*Colors are intended as a guide only. Actual colors may vary. Please request color panel for more accurate color representation.

Interpon D1036

Solid shades



SP12AN RAL7035
Satin smooth



SP14BN RAL7038
Satin smooth



SD10AN RAL1013
Satin smooth



SD11AN RAL1015
Satin smooth



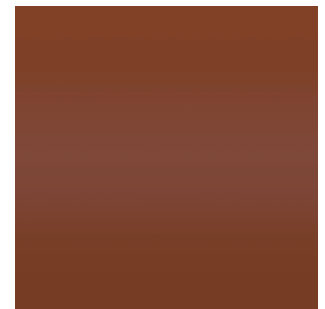
SP12CN RAL7032
Satin smooth



SP100N RAL7037
Satin smooth



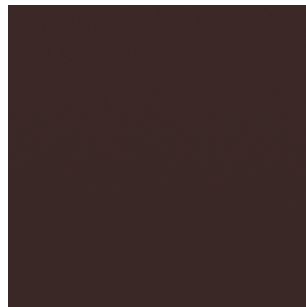
SP10AN RAL7006
Satin smooth



SM132N RAL8004
Satin smooth



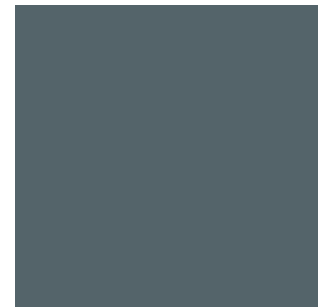
SP15AN RAL7022
Satin smooth



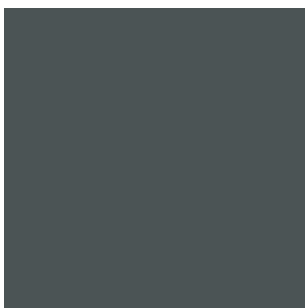
SM12AN RAL8017
Satin smooth



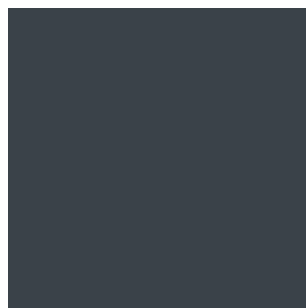
SP294N RAL7043
Matt smooth



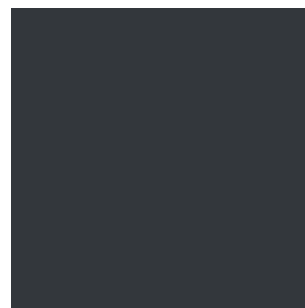
SP255N RAL7031
Matt smooth



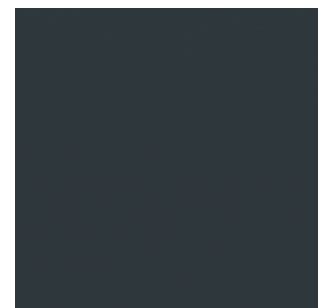
SP214N RAL7012
Matt smooth



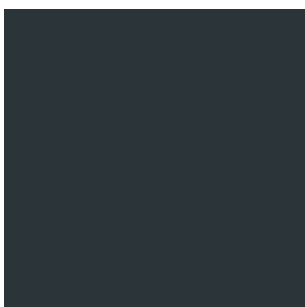
SP203N RAL7015
Matt smooth



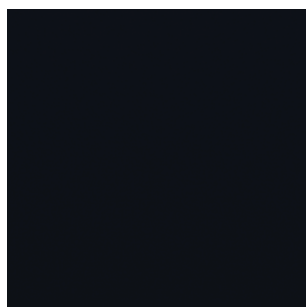
SP223N RAL7024
Matt smooth



SP338N Schueco Grey
Fine Texture



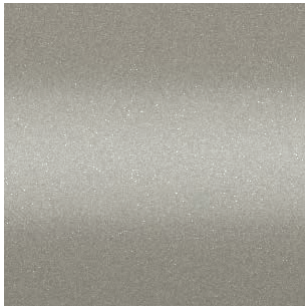
SP18AN RAL7016
Satin smooth



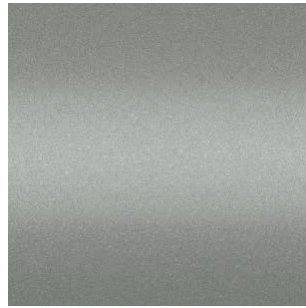
SN25AN RAL9005
Matt smooth

Interpon D2525

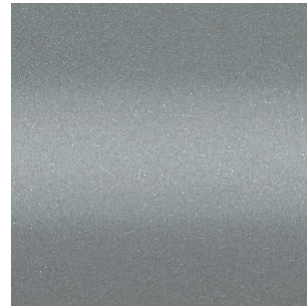
Bonded Metallics



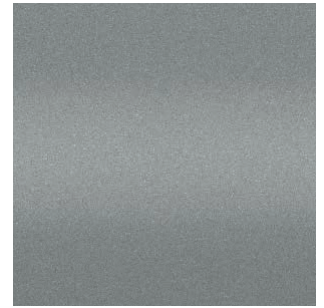
Y2204N Silver champagne
Matt



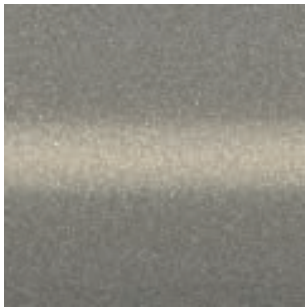
Y2208N Soft Silver
Matt



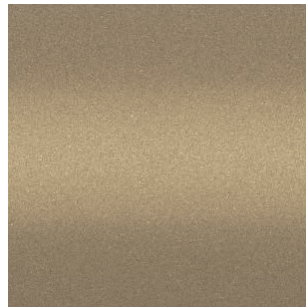
Y2211N RAL9006
Matt



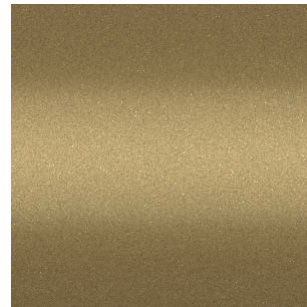
YW26AN Met Eco Gray
Matt (Dry Blend)



Y2109N Sumela
Satin



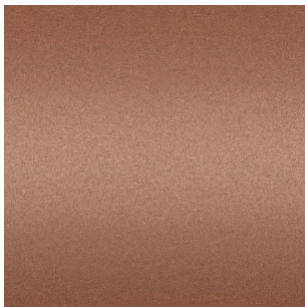
Y2200N Golden Beach
Matt



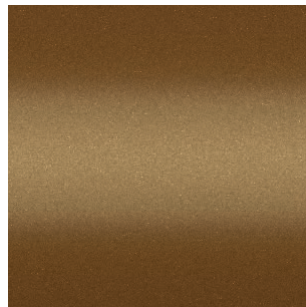
Y2207N Antu
Matt



Y2206N Gold Splendor
Matt



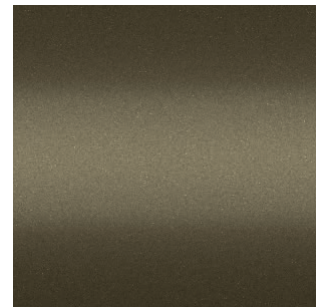
Y2304N Tasiliaq Sable
Texture



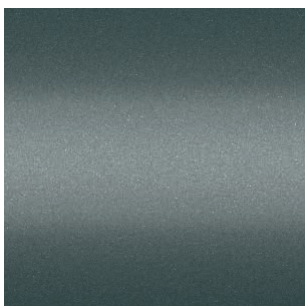
Y2216N Dark Gold
Matt



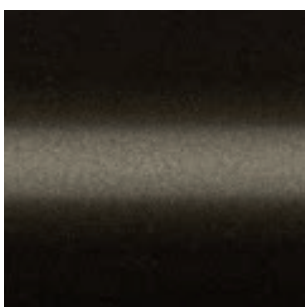
Y2218N Steel Bronze-1
Matt



Y2217N Steel Bronze-2
Matt



Y2375N Baku
Texture



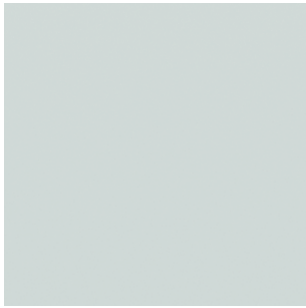
Y2224N Anodic Bronze SM30
Matt smooth

AkzoNobel's exclusive bonded technology in India sets a new standard for premium metallic powder coatings. It enhances luster, finish, and color consistency while eliminating the picture frame effect. As a sustainable solution, Interpon is VOC-free, with reclaimable overspray, creating enduring impressions and futures.



Interpon D2525

Solid shades



YCB18N RAL9016
Satin smooth



YC19AN RAL9003
Satin smooth



YCA87N RAL9010
Satin smooth



YP227N RAL7047
Matt smooth



YC11AN RAL9002
Satin smooth



YP278N RAL7030
Matt smooth



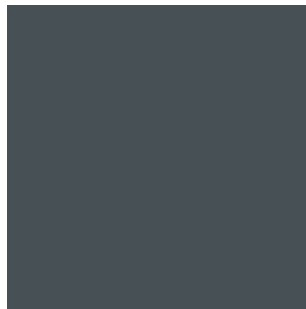
YP313N Quartz Gray
Fine texture



YP263N RAL7012
Matt smooth



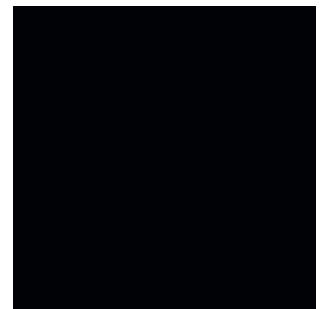
YP242N RAL7043
Matt smooth



YL201N RAL7011
Matt smooth



YP127N RAL7021
Satin smooth



YN213N RAL9005
Matt smooth

Interpon D Stone Effect

Interpon D2000 Stone Effect powder coatings help architects transform metal surfaces, pushing the boundaries of what's possible and giving their creations a beautiful, stone-like appearance. Available in seven different styles to ensure stunning variations in color and patination, the specialty coating has all the aesthetic qualities of Portland stone, limestone and brickwork, but without the practical challenges and cost that come with installing the real thing.



Y4310N White Stone
Texture



Y4314N Sand Stone
Texture

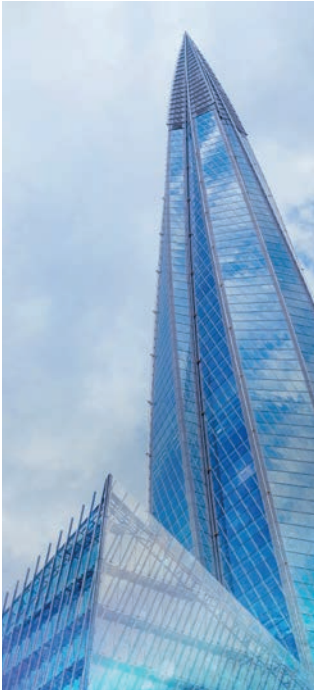


Y4316N Red Brick
Texture



Y4317N Dark Grey Natural Concrete
Texture

Warranties



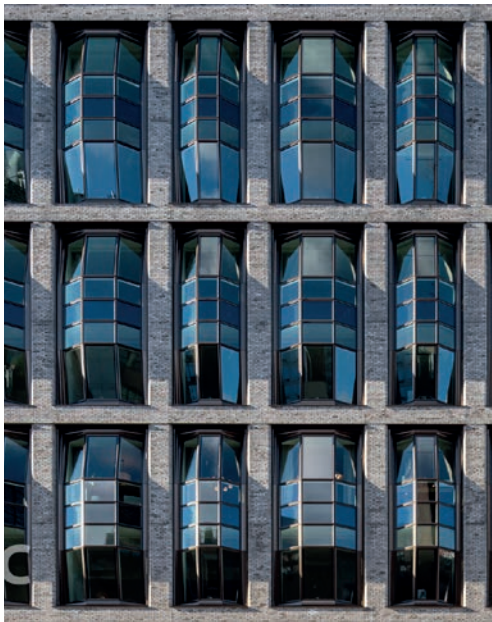
As a leading powder coatings business, it is our mission to help create buildings and relationships that stand the test of time. This means not only providing the colors and finishes to bring architectural creations to life, but also delivering the product warranties to assure customers that their powder coatings have been benchmarked and validated against the industry's most rigorous testing regimes.

The Interpon D series provide film integrity and decorative warranties of 15/10 years, 25/15 years and 30/20 years. They also meet the major architectural standards of AAMA and GSB, as well as Qualicoat.



	Standard Durability	Superdurability	Hyperdurability
Product ranges	Interpon D1036	Interpon D2525	Interpon D3020
Powder film warranty	15 Years	25 Years	30 Years
Decorative warranty color	10 Years	15 Years	20 Years
Color retention (ASTM D2244)	$\Delta E < 5$	$\Delta E < 5$	$\Delta E < 5$
Gloss retention	Gloss loss evenly	Gloss loss evenly	Gloss loss evenly
Chalking (ASTM D4214)	Rating \geq No.8	Rating \geq No.8	Rating \geq No.8
Resin type	Polyester	Polyester	Fluoropolymer (alternative to PVDF)
Performance specifications	AAMA2603, BS6496, AS3715	AAMA2604	AAMA2605
Florida exposure test	1 year South Florida	5 years South Florida	10 years South Florida
Corrosion resistance	1,500 hours (salt spray)	3,000 hours (salt spray)	2,000 hours (cyclic corrosion)
Mechanical	Excellent	Excellent	Good
Finishes	Matt, Satin, Gloss, Texture	Matt, Satin, Gloss, Texture	Matt, Fine Texture
Color range	Virtually all colors from nearly any source (RAL, Pantone and custom colors). Our color offer is subject to technical approval.		

*Warranty is only applicable for Interpon D approved applicator.



Lantern House, New York USA
Interpon D3000



Atlantis The Royal, Dubai, United Arab Emirates
Interpon D2525

AkzoNobel

Since 1792, we've been supplying the innovative paints and coatings that help to color people's lives and protect what matters most. Our world class portfolio of brands – including International, Sikkens and Interpon – is trusted by customers around the globe. We're active in more than 150 countries and use our expertise to sustain and enhance everyday life. Because we believe every surface is an opportunity. It's what you'd expect from a pioneering and long-established paints company that's dedicated to providing sustainable solutions and preserving the best of what we have today – while creating an even better tomorrow. Let's paint the future together.

For more information please visit www.akzonobel.com.

© 2024 Akzo Nobel N.V. All rights reserved.

All products supplied & technical advice given are subject to the standard terms of sale of the AkzoNobel supplying company. Copyright ©2024 Akzo Nobel Powder Coatings Ltd. Interpon is a registered trademark of AkzoNobel.

Issue 1 - 12/2024

Follow us

Powder Coatings by AkzoNobel



interpon.com

Interpon®

Speak to your local representative to order samples and learn more about what **Interpon D** can do for you.



Interpon Design App
Created especially for
architects and specifiers



Environmental Production Declaration

An EPD® is a certified Eco-footprint; our commitment to sustainability.

AkzoNobel India Limited

Plot #62P, 62A, 62B, 43E,
Hoskote Industrial Area.
Bangalore - 562 114
India

T: 7349266869

Interpon.India@Akzonobel.com



Architectural

Your imagination starts with our finish